



Outline Business Case Approved

Rochdale's BSF Project achieved another milestone on 20 May 2008 with the approval of the Outline Business Case by Government (through the Department for Children, Schools and Families). For those interested, the volume of documentation required to secure funding of around £200 million meant that the OBC contained over 820 sides of A4!

Bidder Meetings

Informal meetings have taken place in the last few weeks with prospective bidders. These comprised; building companies, facilities management companies and ICT managed service providers. Bid teams are being brought together as we enter the procurement phase.

BSF – What happens next?

As described in News Bulletin No 4 we are now engaged in the first two steps of the procurement phase. We have advertised details of our project in the Official Journal of the European Government (a requirement for all major projects). We have also released our Pre-Qualification Questionnaire (PQQ). Any contractors interested in bidding for our project have to complete this documentation so that the Authority can establish whether they have the right credentials, experience and financial stability to fulfil the project requirements.

Letters of commitment from Headteachers and Chairs of Governors

The OBC approval process requires Heads and Governors to sign 'in principle' commitments to the ICT managed service, facilities maintenance contracts (PFI Schools) and building maintenance services (non PFI Schools).

Members of the BSF Core Team attended a number of Governing Body meetings to explain these in more detail. Thanks very much for your support.

Planning approvals secured for two sample projects

Development proposals for two sample projects (Hollingworth and Siddal Moor) have secured Outline Planning Consent. The BSF project could not proceed until such time as these approvals were in place.

Middleton Academy Project

The procurement of the new St Anne's Academy is making good progress. The two bidders have been refining their bids through a clarification process. Final tenders have been received with a decision on final bidder confirmed in early July. Construction is due to commence in January 2009.

Development and Buildings Team Resignations

We will be saying goodbye to two members of the Team over the next few months. Andy Smart, School Reorganisation Manager, is leaving in July after six years. Andy has been involved in some significant transformation in his time with us and we appreciate his time with us. Andy hopes to enjoy a simpler life, which at this point could be anywhere in the World.



Andy is considering a rural lifestyle

Mohammed Ahmed who is Project Managing the Academy Project is to leave in September. Mohammed and his family are taking up an opportunity in Oman (which will be a little warmer than Rochdale).

Both posts are at the interview stage and we hope to introduce you to our new team members in the September Bulletin.

BSF – Who's Who



Debra Kay
Capital Projects Manager

Debra has been part of the team for 5 years after leaving a career in banking and is currently working with Siddal Moor Sports College on their BSF vision. She has recently worked with Sure Start to deliver 6 new Children's Centres and is also busy with a full refurbishment project for the new Bowlee Park Community Primary School which is due to be completed in December 2008. Past projects have included the new Sandbrook Community School and stakeholder design development for the PFI schools.

Outside work Debra enjoys a spot of cooking, holidaying (preferably in exotic locations) and spending lots of quality time with her family.

Blossoming Children's Centres

The Schools Reorganisation Team have recently completed a project on behalf of the Sure Start team to deliver six phase two Children's Centres throughout the Borough. These are co-located on primary school sites at Belfield, Castleton, Heybrook, Littleborough, Meanwood and Moorhouse and are a mix of new buildings and full refurbishments.



Moorhouse

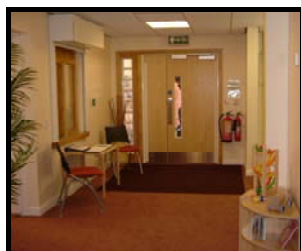
DCSF funding was used to create attractive, modern facilities in the heart of our communities that will transform the way services are delivered for young children and their families, bringing together early education, childcare, health and family support to provide the best start in life for every child.

The services on offer are client driven and so vary according to centre but may include:

- Integrated early education and childcare;
- Support for parents - including advice on parenting, local childcare options and access to specialist services for families;
- Child and family health services - ranging from health screening and health visitor services to breast-feeding support, sleep clinics and diet/nutrition advice;
- Helping parents into work - with links to the local Jobcentre Plus and training.



Meanwood Children's Centre



Jargon buster

Here are some abbreviations you may come across in Schools Service documents:-

RASH Rochdale Association of Secondary Heads

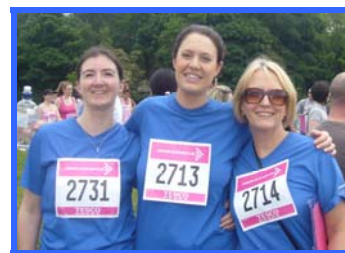
HHC Hopwood Hall College

RSFC Rochdale Sixth Form College

LSC Learning and Skills Council

Team Spirit

Three members of the BSF team decided they needed some light relief from all the BSF paperwork by showing a little team spirit and competing in the Cancer Research UK Race for Life at Heaton



Claire, Carlyne, Janet

Park, Manchester. Claire Butler - Deputy Project Director, Carlyne Wadsworth - Administration Assistant and Janet Marshall - School Support Officer ran the race with many other Council employees whilst raising money for a worthy cause. The BSF runners raised nearly £150 for Cancer Research UK. Well done team.

Primary Capital Programme – an update

Following consultation during April we've now submitted our Primary Strategy for Change to the DCSF, along with the 10 projects we hope to be able to carry out in the first 4 years of the programme, between 2009-10 and 2012-13. DCSF will be assessing Strategies from all Authorities over the next few months, and we expect to hear in September whether ours has been approved. In the meantime, we'll be starting some work on more detailed planning so we're ready to start building work as soon as possible after April 2009, when the money becomes available.

Pending confirmation from DCSF that our Strategy has been approved, we expect to receive around £10m in additional funding over the first two years of the programme, with perhaps around £3.5-£4m per year after that. The ten projects we've prioritised for the early part of the programme are a mix of remodel and new build, total around £30m. We're dedicating some of our formula capital allocations and working in conjunction with the Salford and Manchester Dioceses to pay for the projects.

The government expects the programme to run until 2023-24 and that around 50% of all schools will receive some investment. Once we know what the government's spending priorities are for later in the programme we'll be able to assess which schools should be prioritised. All schools not prioritised for investment will continue to receive DFC allocations, and we'll retain a proportion of our formula allocations to ensure that we can continue to carry out a planned maintenance programme. If you want more information, please contact Yvonne Williams.

Development and Buildings
Schools Service
Floor 8, PO Box 70, Municipal Offices
Smith Street, Rochdale, OL16 1YD

T: 01706 925150
F: 01706 925085
E: SchoolsBSF@rochdale.gov.uk
W: www.rochdale.gov.uk/BSF